

DairyNZ

Profitability. Sustainability. Competitiveness.

CONSULTING OFFICER

Job overview:

There are different levels of Consulting Officers in DairyNZ – Trainee Consulting Officer, Consulting Officer and Senior Consulting Officer. The role is our primary extension method, i.e. the way in which we present information and drive change in on farm practice.

The Consulting Officer runs discussion groups with farmers and farm staff, on farm, where they present topics and ideas and facilitate discussion. There are different types of discussion groups and they also work 1:1 with farmers, and can undertake whole farm assessments to help the farmer work on where they can make improvements.



CAREER PATHWAY:

Trainee Consulting Officer, Consulting Officer, Senior Consulting Officer, Regional Leader.



QUALIFICATIONS:

Some form of degree or industry qualifications is useful.



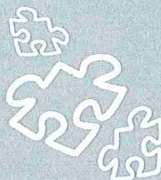
IMPORTANT SUBJECTS IN YEARS 12 & 13:

Whatever is the pre-requisite for a degree in chosen area of expertise - Science, Mathematics, English is likely.



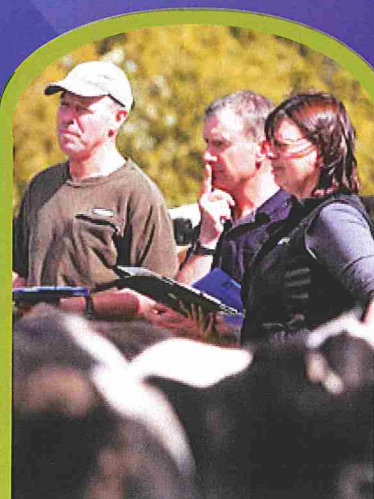
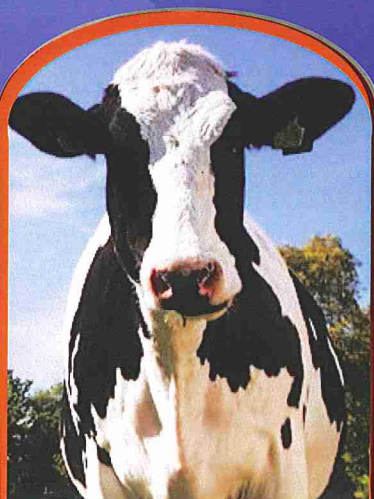
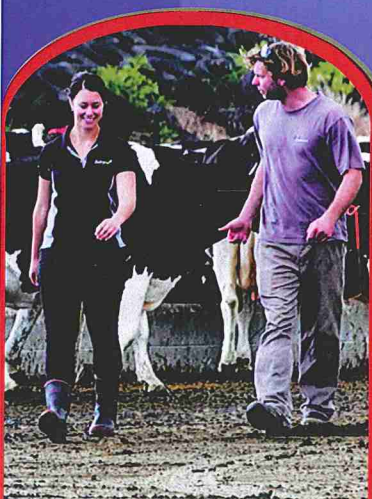
PAY RANGE:

Starts at approximately \$52,000 and can grow to over \$100,000 in a senior or leadership role.



OTHER JOBS WITH DAIRY NZ:

Farm Assistants, Herd Managers, Postgraduate Students, Research Technicians, Scientists, Economists, Analysts.



FOR MORE CAREER INFORMATION VISIT:
www.dairynz.co.nz
www.getahead.co.nz

GET AHEAD
.CO.NZ

Get a future
in agriculture